



Saw Tips

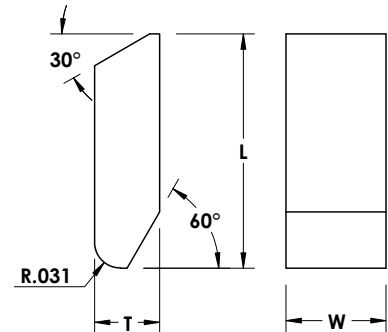


CWD - European/Canadian Style Tip - .312" (5/16") Length

Straight Top

60° chamfer on face at bottom of tip

.095" Thick x Width x .312" Length



Description	Dimensions, inch			TechMet Stock #						
	T	W	L	Grades						
				TMK-3	TMK-7	TMK-22	TMK-25	TMK-35	TMK-45	TMK-76
CWD-7085	0.095	0.085	0.312		15626					
CWD-7100	0.095	0.100	0.312		15428	15628			16006	
CWD-7110	0.095	0.110	0.312		15925		15473		15493	
CWD-7115	0.095	0.115	0.312		15708					
CWD-7120	0.095	0.120	0.312		15786	15757	15738		15484	
CWD-7125	0.095	0.125	0.312		15623	15748				
CWD-7130	0.095	0.130	0.312				15649			
CWD-7135	0.095	0.135	0.312	15758	15686	15629	15699		15485	
CWD-7140	0.095	0.140	0.312	15787	15135	15915	15650			
CWD-7150	0.095	0.150	0.312	15682	15621	15402	15630		15486	15515
CWD-7165	0.095	0.165	0.312	15661	15631	15632	15633		15487	
CWD-7170	0.095	0.170	0.312				15676			
CWD-7180	0.095	0.180	0.312						15919	
CWD-7185	0.095	0.185	0.312	15457	15634	15651	15652		15488	
CWD-7190	0.095	0.190	0.312				15735			
CWD-7200	0.095	0.200	0.312	15759	15711	15647	15691		15489	15477
CWD-7215	0.095	0.215	0.312	15475	15443	15444	15700		15495	15497
CWD-7230	0.095	0.230	0.312		15692	15648	15445		15490	15411
CWD-7250	0.095	0.250	0.312			15677	15678			15476
CWD-7265	0.095	0.265	0.312				15977			
CWD-7280	0.095	0.280	0.312			15635	15693			
CWD-7312	0.095	0.312	0.312		15158	15824	16001			
CWD-7375	0.095	0.375	0.312			15159				

All saw tips are Braze Treated.

All are available Pretinned or Trimetal Shimmed upon request.

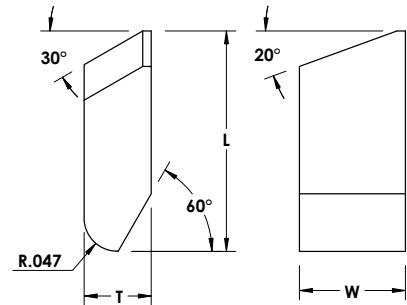
For Pretinning add 'PT' to the TechMet Stock # when ordering, example '15159PT'.

For Trimetal Shimmed add 'TMS' to the TechMet Stock # when ordering, example '15159TMS'.

See pages 72 and 73 for more information on grades.

CWD - European/Canadian Style Tip - .312" (5/16") Length

Bevel Top / Right and Left Hand Tips
 60° chamfer on face at bottom of tip
 .095" Thick x Width x .312" Length



Right-hand shown; left-hand mirror image.

Description	Dimensions, inch			Hand	TechMet Stock #						
	T	W	L		Grades						
					TMK-3	TMK-7	TMK-22	TMK-25	TMK-35	TMK-45	TMK-76
CWD-7150R	0.095	0.150	0.312	Right				15951			
CWD-7150L	0.095	0.150	0.312	Left				15952			
CWD-7165R	0.095	0.165	0.312	Right				15953			
CWD-7165L	0.095	0.165	0.312	Left				15954			
CWD-7185R	0.095	0.185	0.312	Right				15955			
CWD-7185L	0.095	0.185	0.312	Left				15956			
CWD-7200R	0.095	0.200	0.312	Right				15957			
CWD-7200L	0.095	0.200	0.312	Left				15958			
CWD-7215R	0.095	0.215	0.312	Right		15975		15961		15993	
CWD-7215L	0.095	0.215	0.312	Left		15974		15962		15994	
CWD-7230R	0.095	0.230	0.312	Right		15446					
CWD-7230L	0.095	0.230	0.312	Left		15447					
CWD-7250R	0.095	0.250	0.312	Right			15454		15409		
CWD-7250L	0.095	0.250	0.312	Left			15453		15408		
CWD-7312R	0.095	0.312	0.312	Right			16028				
CWD-7312L	0.095	0.312	0.312	Left			16027				

All saw tips are Braze Treated.
 All are available Pretinned or Trimetal Shimmed upon request.
 For Pretinning add 'PT' to the TechMet Stock # when ordering, example '16027PT'.
 For Trimetal Shimmed add 'TMS' to the TechMet Stock # when ordering, example '16027TMS'.

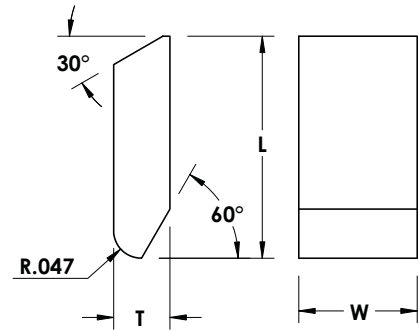
See pages 72 and 73 for more information on grades.

CWE - European/Canadian Style Tip - .375" (3/8") Length

Straight Top

60° chamfer on face at bottom of tip

.095" Thick x Width x .375" Length



Description	Dimensions, inch			TechMet Stock #							
	T	W	L	Grades							
				TMK-3	TMK-7	TMK-22	TMK-25	TMK-35	TMK-45	TMK-76	
CWE-7110	0.095	0.110	0.375		15685		15474				
CWE-7120	0.095	0.120	0.375			15599	15412		16009		
CWE-7130	0.095	0.130	0.375					15653			
CWE-7135	0.095	0.135	0.375			15740	15729	15468	15817		
CWE-7150	0.095	0.150	0.375		15730	15746			15918		
CWE-7160	0.095	0.160	0.375				15482				
CWE-7165	0.095	0.165	0.375			15654			15813		
CWE-7170	0.095	0.170	0.375				15413				
CWE-7180	0.095	0.180	0.375				15702				
CWE-7185	0.095	0.185	0.375			15712	15467		15814		
CWE-7190	0.095	0.190	0.375				15779				
CWE-7200	0.095	0.200	0.375		15404	15636	15450		15818		
CWE-7215	0.095	0.215	0.375		15637	15969	15451		15816		
CWE-7220	0.095	0.220	0.375			15655	15491		15927		
CWE-7230	0.095	0.230	0.375			15452	15741		15492		
CWE-7240	0.095	0.240	0.375				15511				
CWE-7250	0.095	0.250	0.375			15638	15644				
CWE-7260	0.095	0.260	0.375				15771				
CWE-7270	0.095	0.270	0.375			16005	15979		15815		
CWE-7280	0.095	0.280	0.375			15783	16000				
CWE-7300	0.095	0.300	0.375			15703	15431				
CWE-7330	0.095	0.330	0.375						15422		

All saw tips are Braze Treated.

All are available Pretinned or Trimetal Shimmed upon request.

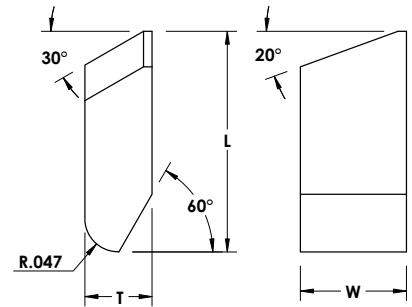
For Pretinning add 'PT' to the TechMet Stock # when ordering, example '15422PT'.

For Trimetal Shimmed add 'TMS' to the TechMet Stock # when ordering, example '15422TMS'.

See pages 72 and 73 for more information on grades.

CWE - European/Canadian Style Tip - .375" (3/8") Length

Bevel Top / Right and Left Hand Tips
 60° chamfer on face at bottom of tip
 .095" Thick x Width x .375" Length



Right-hand shown; left-hand mirror image.

Description	Dimensions, inch			Hand	TechMet Stock #						
	T	W	L		Grades						
					TMK-3	TMK-7	TMK-22	TMK-25	TMK-35	TMK-45	TMK-76
CWE-7150R	0.095	0.150	0.375	Right				15963			
CWE-7150L	0.095	0.150	0.375	Left				15964			
CWE-7185R	0.095	0.185	0.375	Right			15788				
CWE-7185L	0.095	0.185	0.375	Left			15789				
CWE-7190R	0.095	0.190	0.375	Right				16019			
CWE-7190L	0.095	0.190	0.375	Left				16018			
CWE-7215R	0.095	0.215	0.375	Right				15791			
CWE-7215L	0.095	0.215	0.375	Left				15792			
CWE-7230R	0.095	0.230	0.375	Right				16021			
CWE-7230L	0.095	0.230	0.375	Left				16020			
CWE-7240R	0.095	0.240	0.375	Right				16023			
CWE-7240L	0.095	0.240	0.375	Left				16022			
CWE-7250R	0.095	0.250	0.375	Right				16025			
CWE-7250L	0.095	0.250	0.375	Left				16024			
CWE-7270R	0.095	0.270	0.375	Right			15971	15466			
CWE-7270L	0.095	0.270	0.375	Left			15970	15465			

All saw tips are Braze Treated.
 All are available Pretinned or Trimetal Shimmed upon request.
 For Pretinning add 'PT' to the TechMet Stock # when ordering, example '15465PT'.
 For Trimetal Shimmed add 'TMS' to the TechMet Stock # when ordering, example '15465TMS'.

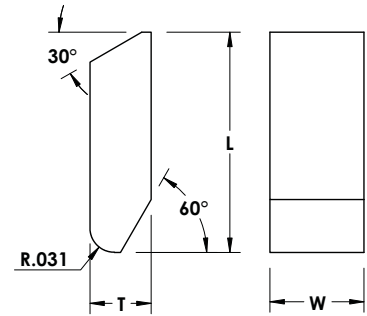
See pages 72 and 73 for more information on grades.

CWF - European/Canadian Style Tip - .500" (1/2") Length

Straight Top

60° chamfer on face at bottom of tip

.125" Thick x Width x .500" Length



Description	Dimensions, inch			TechMet Stock #							
	T	W	L	Grades							
				TMK-3	TMK-7	TMK-22	TMK-25	TMK-35	TMK-45	TMK-76	
CWF-7110	0.125	0.110	0.500					15395	15514		
CWF-7135	0.125	0.135	0.500					15749		15104	
CWF-7140	0.125	0.140	0.500					15662	15639		
CWF-7145	0.125	0.145	0.500					15238	15694	15709	15101
CWF-7150	0.125	0.150	0.500					15239	15127	15128	15102
CWF-7160	0.125	0.160	0.500								
CWF-7165	0.125	0.165	0.500		15745	15240	15132				15753
CWF-7170	0.125	0.170	0.500				15146	15436	15103		
CWF-7180	0.125	0.180	0.500			15241	15147	15129	15162		
CWF-7185	0.125	0.185	0.500				15148	15437			
CWF-7190	0.125	0.190	0.500				15247	15133	15778	15105	
CWF-7200	0.125	0.200	0.500				15373	15374	15704	15106	
CWF-7210	0.125	0.210	0.500					15781	15752	15107	
CWF-7215	0.125	0.215	0.500				15265	15149	15760		
CWF-7220	0.125	0.220	0.500		15761			15663	15705	15108	
CWF-7230	0.125	0.230	0.500		15707	15725	15289			15191	
CWF-7240	0.125	0.240	0.500				15414			15109	
CWF-7250	0.125	0.250	0.500			15680	15242	15640	15683	15110	
CWF-7260	0.125	0.260	0.500			15664		15143		15111	
CWF-7270	0.125	0.270	0.500			15438	15665	15144		15666	
CWF-7275	0.125	0.275	0.500					15641			
CWF-7280	0.125	0.280	0.500			15734	15243	15375		15112	
CWF-7290	0.125	0.290	0.500					15695	15130		
CWF-7300	0.125	0.300	0.500					15376	15439		
CWF-7310	0.125	0.310	0.500				15440	15441			
CWF-7330	0.125	0.330	0.500					15696	15145	15766	
CWF-7340	0.125	0.340	0.500							15724	
CWF-7350	0.125	0.350	0.500				15978		15713		
CWF-7375	0.125	0.375	0.500				15136				
CWF-7400	0.125	0.400	0.500					15714			
CWF-7425	0.125	0.425	0.500							15723	

All saw tips are Braze Treated.

All are available Pretinned or Trimetal Shimmed upon request.

For Pretinning add 'PT' to the TechMet Stock # when ordering, example '15723PT'.

For Trimetal Shimmed add 'TMS' to the TechMet Stock # when ordering, example '15723TMS'.

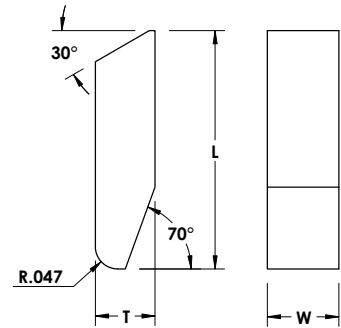
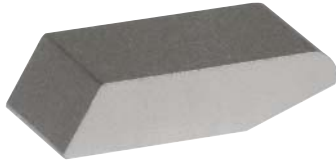
See pages 72 and 73 for more information on grades.

CFS - Long Chamfer Style Tip - .500" (1/2") Length

Straight Top

70° chamfer on face at bottom of tip

.125" Thick x Width x .500" Length



Description	Dimensions, inch			TechMet Stock #						
	T	W	L	Grades						
				TMK-3	TMK-7	TMK-22	TMK-25	TMK-35	TMK-45	TMK-76
CFS-7120	0.125	0.120	0.500						15469	
CFS-7130	0.125	0.130	0.500						15200	
CFS-7135	0.125	0.135	0.500				15155		15224	
CFS-7140	0.125	0.140	0.500						15201	
CFS-7145	0.125	0.145	0.500					15417		
CFS-7150	0.125	0.150	0.500						15202	
CFS-7160	0.125	0.160	0.500				15706		15203	
CFS-7165	0.125	0.165	0.500					15418	15739	
CFS-7170	0.125	0.170	0.500						15204	
CFS-7180	0.125	0.180	0.500				15750		15205	
CFS-7185	0.125	0.185	0.500						15976	
CFS-7190	0.125	0.190	0.500						15206	
CFS-7200	0.125	0.200	0.500					15432	15207	
CFS-7210	0.125	0.210	0.500						15208	
CFS-7215	0.125	0.215	0.500						15940	
CFS-7220	0.125	0.220	0.500						15209	
CFS-7230	0.125	0.230	0.500						15281	
CFS-7240	0.125	0.240	0.500					15433	15210	
CFS-7250	0.125	0.250	0.500						15211	
CFS-7260	0.125	0.260	0.500						15212	
CFS-7270	0.125	0.270	0.500						15689	
CFS-7280	0.125	0.280	0.500						15213	
CFS-7290	0.125	0.290	0.500						15300	
CFS-7300	0.125	0.300	0.500						15423	
CFS-7340	0.125	0.340	0.500						15396	
CFS-7350	0.125	0.350	0.500						15939	

All saw tips are Braze Treated.

All are available Pretinned or Trimetal Shimmed upon request.

For Pretinning add 'PT' to the TechMet Stock # when ordering, example '15939PT'.

For Trimetal Shimmed add 'TMS' to the TechMet Stock # when ordering, example '15939TMS'.

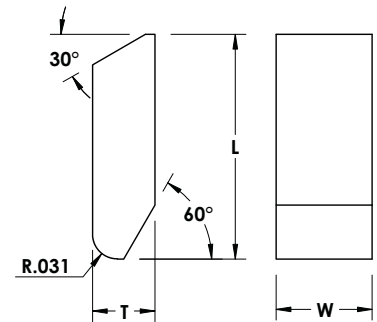
See pages 72 and 73 for more information on grades.

CWG - European/Canadian Style Tip - .375" (3/8") Length

Straight Top

60° chamfer on face at bottom of tip

.125" Thick x Width x .375" Length



Description	Dimensions, inch			TechMet Stock #							
	T	W	L	Grades							
				TMK-3	TMK-7	TMK-22	TMK-25	TMK-35	TMK-45	TMK-76	
CWG-7100	0.125	0.100	0.375			15319					
CWG-7115	0.125	0.115	0.375				15736				
CWG-7120	0.125	0.120	0.375				15722		15642		
CWG-7130	0.125	0.130	0.375			15768		15920	15698		
CWG-7135	0.125	0.135	0.375		15769		15667				
CWG-7140	0.125	0.140	0.375				15499	15916			
CWG-7150	0.125	0.150	0.375		15731	15732	15773	15742	15496	15156	
CWG-7160	0.125	0.160	0.375			15921	15609				
CWG-7165	0.125	0.165	0.375		15377	15715	15448		15424		
CWG-7170	0.125	0.170	0.375				15292	15917		15601	
CWG-7180	0.125	0.180	0.375		15610	15737	15293		15913	15607	
CWG-7185	0.125	0.185	0.375	15755	15378	15379	15747		15425		
CWG-7190	0.125	0.190	0.375				15388	15922	15434		
CWG-7200	0.125	0.200	0.375	15756	15380	15356	15294	15914		15602	
CWG-7210	0.125	0.210	0.375					15923			
CWG-7215	0.125	0.215	0.375	15772	15381	15357	15611	15762		15603	
CWG-7220	0.125	0.220	0.375		15389		15295			15604	
CWG-7225	0.125	0.225	0.375					15912			
CWG-7230	0.125	0.230	0.375		15331	15449	15390	15131	15427	15608	
CWG-7240	0.125	0.240	0.375		15763	15743	15296	15383		15605	
CWG-7250	0.125	0.250	0.375		15384	15710	15297	15385		15754	
CWG-7260	0.125	0.260	0.375				15764	15770		15606	
CWG-7265	0.125	0.265	0.375			15924	15765			15237	
CWG-7270	0.125	0.270	0.375		15668	15612	15298	15982			
CWG-7280	0.125	0.280	0.375		15657	15697	15643	15386		15458	
CWG-7290	0.125	0.290	0.375				15416	15716			
CWG-7300	0.125	0.300	0.375				15613			15907	
CWG-7320	0.125	0.320	0.375		15733	15681		15614			
CWG-7335	0.125	0.335	0.375	15177		15656	15137				
CWG-7375	0.125	0.375	0.375							15670	
CWG-7400	0.125	0.400	0.375	15382		15717	15785	15387	15405		

All saw tips are Braze Treated.

All are available Pretinned or Trimetal Shimmed upon request.

For Pretinning add 'PT' to the TechMet Stock # when ordering, example '15405PT'.

For Trimetal Shimmed add 'TMS' to the TechMet Stock # when ordering, example '15405TMS'.

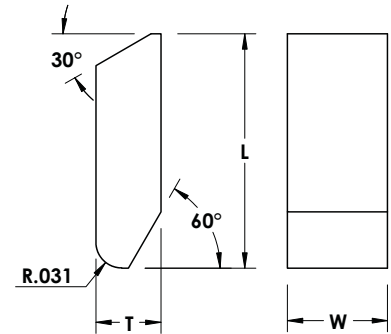
See pages 72 and 73 for more information on grades.

CWH - European/Canadian Style Tip - .344" (11/32") Length

Straight Top

60° chamfer on face at bottom of tip

.125" Thick x Width x .344" Length



Description	Dimensions, inch			TechMet Stock #							
	T	W	L	Grades							
				TMK-3	TMK-7	TMK-22	TMK-25	TMK-35	TMK-45	TMK-76	
CWH-7110	0.125	0.110	0.344		15299						
CWH-7115	0.125	0.115	0.344		15181						
CWH-7135	0.125	0.135	0.344	15351	15291	15182					
CWH-7140	0.125	0.140	0.344		15183						
CWH-7150	0.125	0.150	0.344		15185	15184					
CWH-7165	0.125	0.165	0.344	15348	15186	15320	15459				
CWH-7180	0.125	0.180	0.344		15279						
CWH-7185	0.125	0.185	0.344	15349	15254	15187	15347				
CWH-7200	0.125	0.200	0.344		15310	15192					
CWH-7215	0.125	0.215	0.344	15350	15615						
CWH-7220	0.125	0.220	0.344		15282	15188	15618				
CWH-7230	0.125	0.230	0.344		15360		15371				
CWH-7240	0.125	0.240	0.344		15193	15305					
CWH-7270	0.125	0.270	0.344			15189					
CWH-7280	0.125	0.280	0.344				15372				
CWH-7312	0.125	0.312	0.344			15625					
CWH-7335	0.125	0.335	0.344			15512					
CWH-7375	0.125	0.375	0.344			15410					

All saw tips are Braze Treated.

All are available Pretinned or Trimetal Shimmed upon request.

For Pretinning add 'PT' to the TechMet Stock # when ordering, example '15410PT'.

For Trimetal Shimmed add 'TMS' to the TechMet Stock # when ordering, example '15410TMS'.

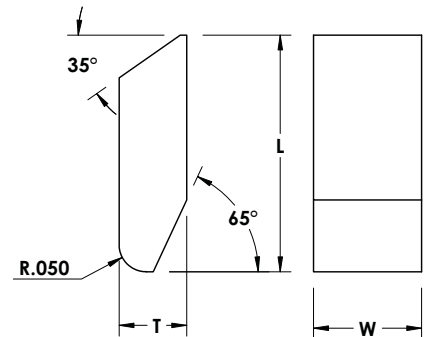
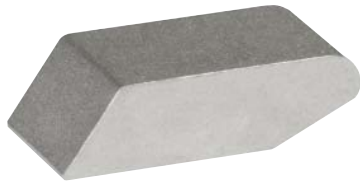
See pages 72 and 73 for more information on grades.

WXC Series Saw Tip - .438" (7/16") Length

Straight Top

65° chamfer on face at bottom of tip

.125" Thick x Width x .438" Length



Description	Dimensions, inch			TechMet Stock #						
	T	W	L	Grades						
				TMK-3	TMK-7	TMK-22	TMK-25	TMK-35	TMK-45	TMK-76
WXC-7100	0.125	0.100	0.438						15516	
WXC-7110	0.125	0.110	0.438						15517	
WXC-7120	0.125	0.120	0.438						15518	
WXC-7130	0.125	0.130	0.438				16008		15519	
WXC-7140	0.125	0.140	0.438						15419	
WXC-7150	0.125	0.150	0.438						15420	
WXC-7160	0.125	0.160	0.438						15421	
WXC-7170	0.125	0.170	0.438						15520	
WXC-7180	0.125	0.180	0.438						15479	
WXC-7190	0.125	0.190	0.438						15821	
WXC-7200	0.125	0.200	0.438						15478	
WXC-7220	0.125	0.220	0.438						15999	
WXC-7230	0.125	0.230	0.438				16007		15483	
WXC-7250	0.125	0.250	0.438						15822	
WXC-7270	0.125	0.270	0.438						15823	

All saw tips are Braze Treated.

All are available Pretinned or Trimetal Shimmed upon request.

For Pretinning add 'PT' to the TechMet Stock # when ordering, example '15823PT'.

For Trimetal Shimmed add 'TMS' to the TechMet Stock # when ordering, example '15823TMS'.

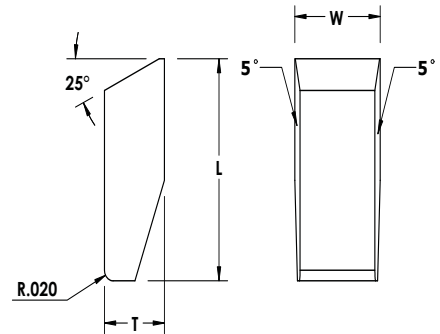
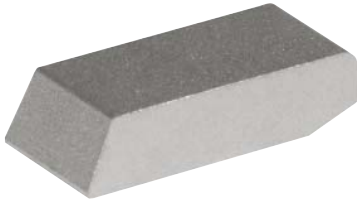
See pages 72 and 73 for more information on grades.

CF Series Saw Tip

Straight Top

5° taper on sides

60° - 70° chamfer on face at bottom of tip



Description		TechMet Stock #						
		Grades						
L x W x T, mm	L x W x T, inch	TMK-3	TMK-7	TMK-22	TMK-25	TMK-35	TMK-45	TMK-76
6.0 x 3.0 x 2.0 mm	0.236 x 0.118 x 0.079 in			15992				
8.0 x 3.6 x 2.3 mm	0.315 x 0.142 x 0.091 in			15995				
8.5 x 3.5 x 2.5 mm	0.335 x 0.138 x 0.098 in			15991				
8.5 x 3.8 x 2.5 mm	0.335 x 0.150 x 0.098 in		15908	15806				
8.5 x 4.0 x 2.5 mm	0.335 x 0.157 x 0.098 in			15989				
9.0 x 3.8 x 2.7 mm	0.354 x 0.150 x 0.106 in		15800	15801				
9.0 x 4.1 x 2.7 mm	0.354 x 0.161 x 0.106 in			15398				
9.0 x 4.3 x 2.7 mm	0.354 x 0.170 x 0.106 in			15802				
9.0 x 4.7 x 2.7 mm	0.354 x 0.185 x 0.106 in			15803				
9.0 x 4.9 x 2.7 mm	0.354 x 0.193 x 0.106 in		15804					
9.0 x 5.0 x 2.7 mm	0.354 x 0.197 x 0.106 in		15807					
10.5 x 3.8 x 2.5 mm	0.413 x 0.150 x 0.098 in			15397				
10.5 x 4.0 x 2.5 mm	0.413 x 0.157 x 0.098 in			15986				
10.5 x 4.5 x 2.5 mm	0.413 x 0.177 x 0.098 in			15985				
10.5 x 4.7 x 2.5 mm	0.413 x 0.185 x 0.098 in			15513				
10.5 x 5.0 x 2.5 mm	0.413 x 0.197 x 0.098 in			15984				
10.5 x 5.0 x 3.5 mm	0.413 x 0.197 x 0.138 in			15810				
10.5 x 5.5 x 3.5 mm	0.413 x 0.217 x 0.138 in		15996					
10.5 x 7.5 x 3.0 mm	0.413 x 0.295 x 0.118 in			15983				
10.7 x 4.0 x 3.5 mm	0.421 x 0.157 x 0.138 in			15808				
10.7 x 4.5 x 3.5 mm	0.421 x 0.177 x 0.138 in			15809				
10.7 x 5.5 x 3.5 mm	0.421 x 0.217 x 0.138 in			15805				
13.0 x 7.5 x 4.0 mm	0.512 x 0.295 x 0.157 in			15811				

All saw tips are Braze Treated.

All are available Pretinned or Trimetal Shimmed upon request.

For Pretinning add 'PT' to the TechMet Stock # when ordering, example '15811PT'.

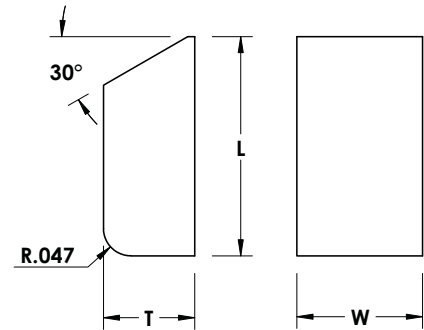
For Trimetal Shimmed add 'TMS' to the TechMet Stock # when ordering, example '15811TMS'.

See pages 72 and 73 for more information on grades.

WF - American/Conventional Style Tip - .500" (1/2") Length

Straight Top

.125" Thick x Width x .500" Length



Description	Dimensions, inch			TechMet Stock #						
	T	W	L	Grades						
				TMK-3	TMK-7	TMK-22	TMK-25	TMK-35	TMK-45	TMK-76
WF-7150	0.125	0.150	0.500							16003
WF-7165	0.125	0.165	0.500				15194			
WF-7180	0.125	0.180	0.500				15660			
WF-7215	0.125	0.215	0.500				15391			
WF-7230	0.125	0.230	0.500				15720			
WF-7250	0.125	0.250	0.500				15392			
WF-7275	0.125	0.275	0.500			15321				
WF-7280	0.125	0.280	0.500				15368			
WF-7290	0.125	0.290	0.500				15774			
WF-7300	0.125	0.300	0.500			15232				
WF-7312	0.125	0.312	0.500			15342				
WF-7375	0.125	0.375	0.500			15266				
WF-7400	0.125	0.400	0.500				15619			
WF-7437	0.125	0.437	0.500			15287				
WF-7500	0.125	0.500	0.500			15233		15600		
WF-7530	0.125	0.530	0.500				16004			
WF-7562	0.125	0.562	0.500			15288		15284		
WF-7625	0.125	0.625	0.500			15290	15435			
WF-7687	0.125	0.687	0.500			15306				
WF-7750	0.125	0.750	0.500			15267				

All saw tips are Braze Treated.

All are available Pretinned or Trimetal Shimmed upon request.

For Pretinning add 'PT' to the TechMet Stock # when ordering, example '15267PT'.

For Trimetal Shimmed add 'TMS' to the TechMet Stock # when ordering, example '15267TMS'.

See pages 72 and 73 for more information on grades.

The background of the page is a collection of various tungsten carbide saw tips. These tips are shown in different shapes and sizes, including rectangular, trapezoidal, and circular forms. Some tips have a distinct cutting edge. A large, dark blue circle is centered on the page, containing the title and subtitle. The overall image is a technical illustration of these industrial components.

Technical Guide

Saw Tips



Grades – Saw Tips

TMK-3	Offers excellent wear and corrosion resistance. Perfect for particle board and man-made laminates where impact is not a factor. Great performance in glue line situations. Can be a demanding grade to braze due its very high hardness. Use of tri-metal shim and reduced heat levels are highly recommended when brazing. TMK-3 is a 3% cobalt fine grain tungsten carbide grade.					
	WC %	Co %	TaC %	Hardness (HRA)	Density (g/cm ³)	TRS, min (psi)
	96	3	1	93.3	15.20	250,000

TMK-7	Light finishing grade that excels in man-made materials, plywood, MDF and laminates. Its slightly lower hardness compared to TMK-3 makes it more forgiving to braze and grind. Use of tri-metal shim is recommended. TMK-7 is a 4.4% cobalt fine grain tungsten carbide grade.					
	WC %	Co %	TaC %	Hardness (HRA)	Density (g/cm ³)	TRS, min (psi)
	95.6	4.4	–	92.7	15.10	300,000

TMK-22	General purpose grade with broad application in light to medium impact situations. TMK-22 is one of the best and most popular secondary wood grades. It brazes and grinds with ease and offers superior life and durability. TMK-22 is a 6% cobalt fine grain tungsten carbide grade.					
	WC %	Co %	TaC %	Hardness (HRA)	Density (g/cm ³)	TRS, min (psi)
	94	6	–	92.1	14.95	400,000

TMK-25	Good shock and wear resistance properties in primary and secondary applications. Excellent grade when running a range of different wood species and for warm weather environments when tip life is critical and impact is not severe. TMK-25 is an 8% cobalt fine grain tungsten carbide grade.					
	WC %	Co %	TaC %	Hardness (HRA)	Density (g/cm ³)	TRS, min (psi)
	92	8	-	90.5	14.70	375,000

Grades – Saw Tips

TMK-35	Heavy roughing grade and an old favorite of many hard-working sawmills. Provides good tip life with high impact characteristics. Superior durability in all but the most severe cold weather applications. TMK-35 is a 10% cobalt medium grain tungsten carbide grade.					
	WC %	Co %	TaC %	Hardness (HRA)	Density (g/cm ³)	TRS, min (psi)
	90	10	-	88.5	14.53	425,000

TMK-45	Very high shock resistance properties. Virtually unbreakable grade suitable for torch brazing and high stress cutting conditions such as frozen wood, small nails, rocks and other foreign objects. Super tough edger grade for green lumber. TMK-45 is a 12% cobalt coarse grain tungsten carbide grade.					
	WC %	Co %	TaC %	Hardness (HRA)	Density (g/cm ³)	TRS, min (psi)
	88	12	-	87.5	14.33	450,000

TMK-76	Nail cutting grade – the toughest saw tip grade anywhere. Cuts through pallet nails with ease. TMK-76 is a 25% cobalt medium grain tungsten carbide grade.					
	WC %	Co %	TaC %	Hardness (HRA)	Density (g/cm ³)	TRS, min (psi)
	75	25	-	81.5	13.15	450,000

Nominal Grain Size Ranges

fine	medium	coarse
> 1 to 2 μ	> 2 to 4 μ	> 4 μ